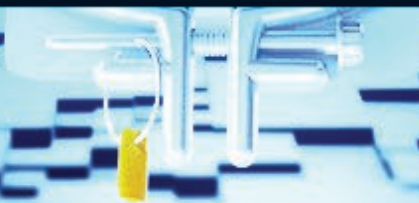
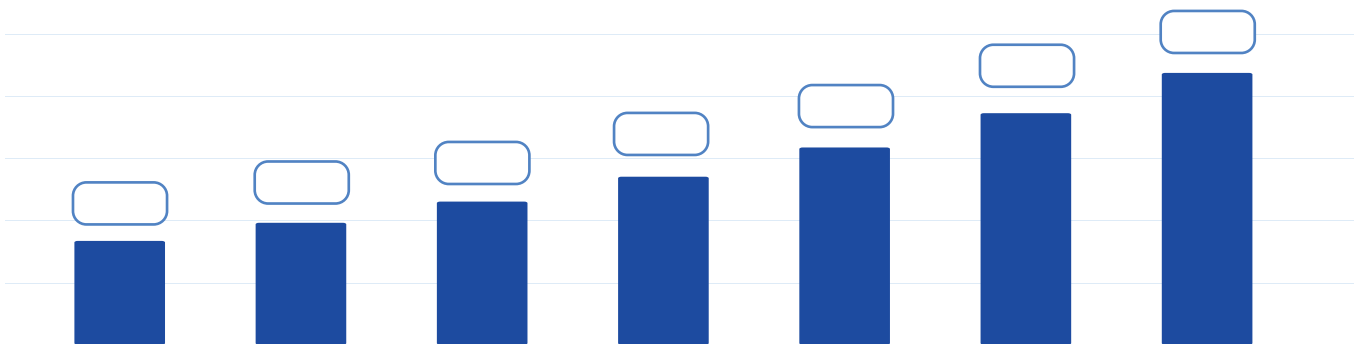


Type ALF FM 2S 2-200A 240V
Hz Kh 7.2 1 PH 3W AE-1356

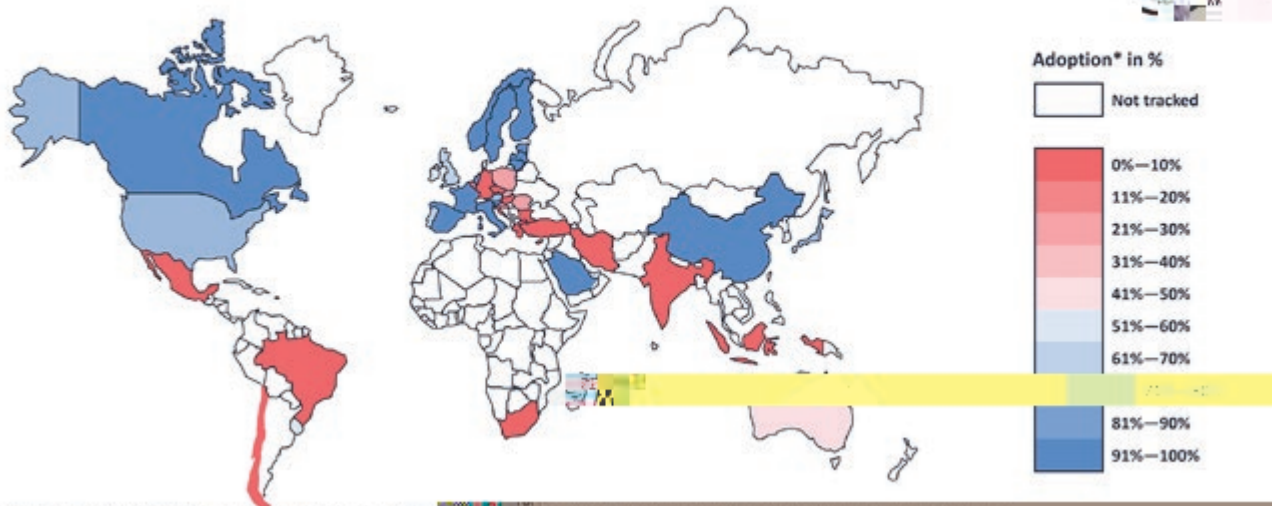
MULT BY 1

PROHIBIT THE OPENING OF THE COVER



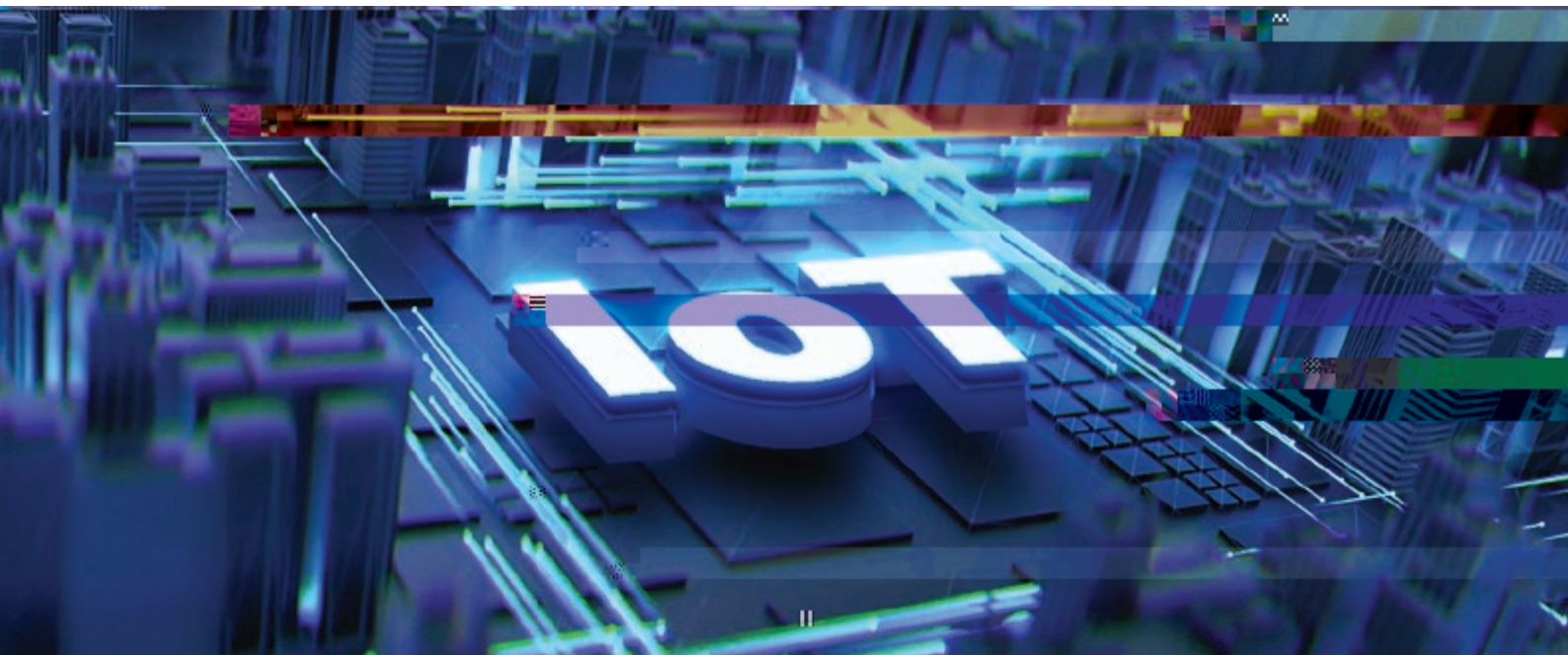


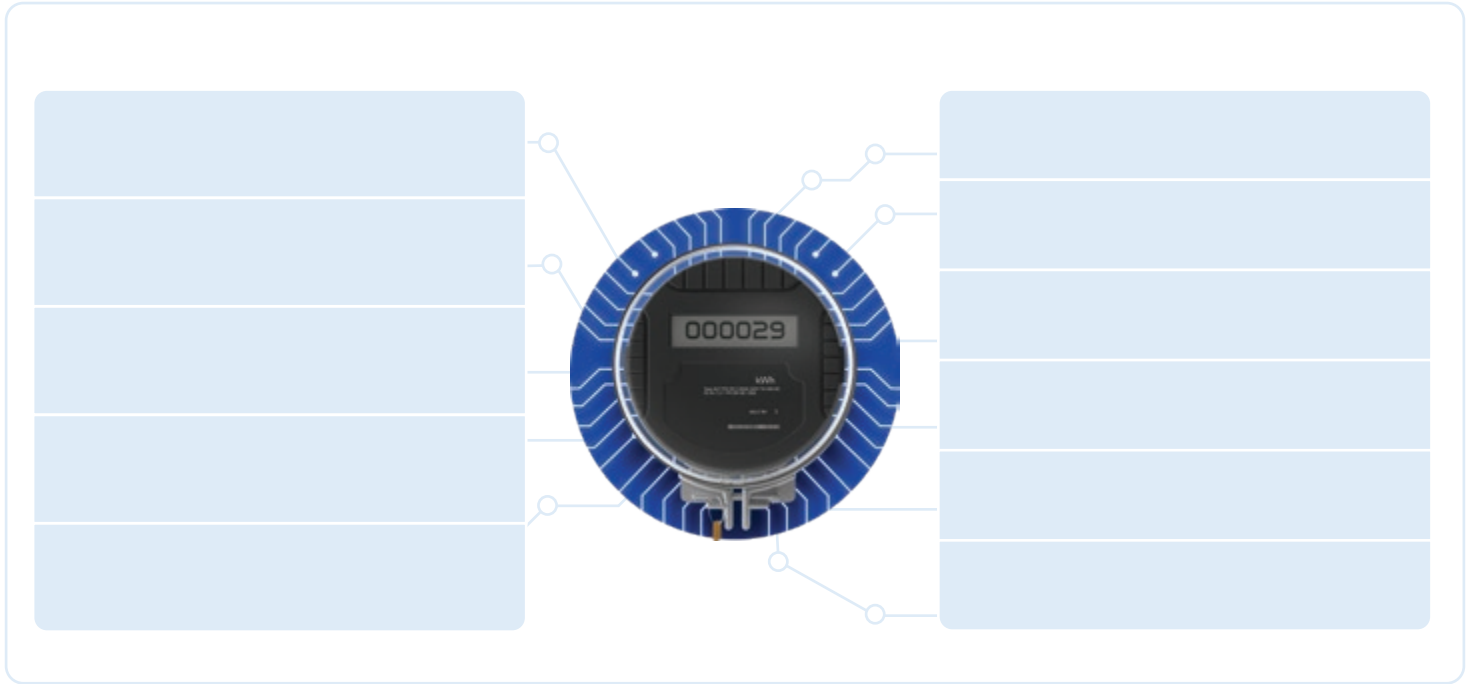
Global smart electricity meter adoption 2024



* Smart meter adoption (as of Q4 2023) = The share of smart (AMI) electricity meters (2023) in the total number of metering points that includes residential, commercial, and industrial segments.
 Source: IOT Analytics Research 2024 - Global Smart Meter Market Tracker 2020-2030. <https://www.iot-analytics.com/research/global-smart-meter-market-tracker-2020-2030>

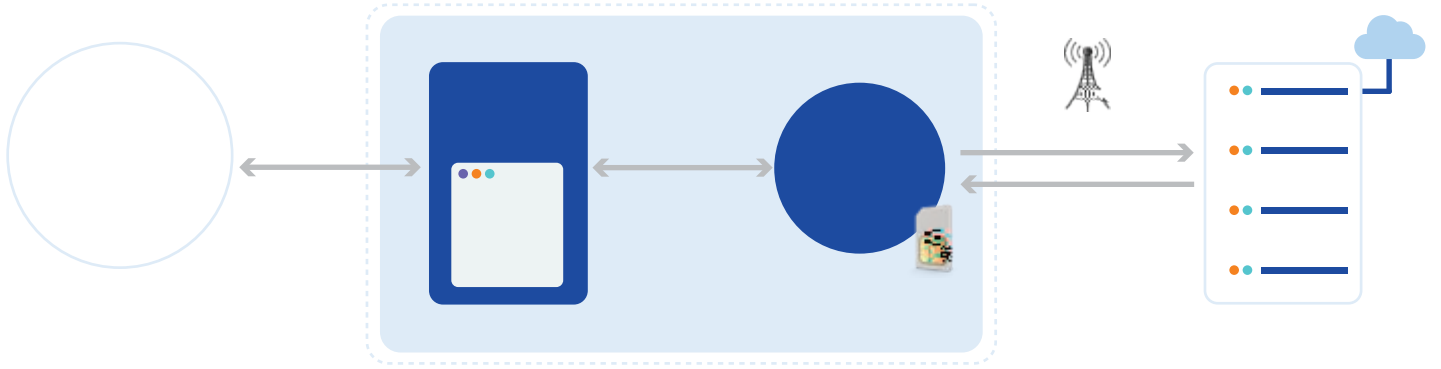
-
-
-











-

-

-

-

-

-

-

•

•

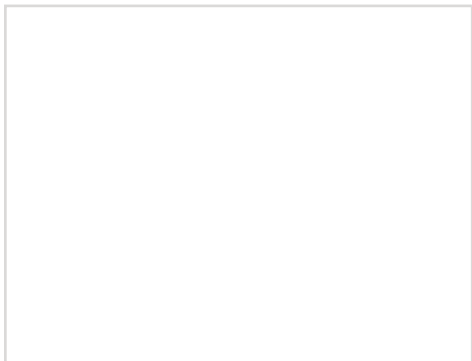




-
-
-
-
-



-
-
-
-
-



-
-
-
-
-
-
-



•

•

•

•

•

•

•

•

•

•

•

•

